

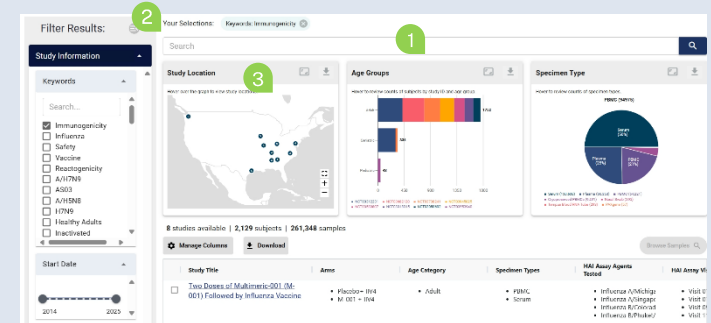
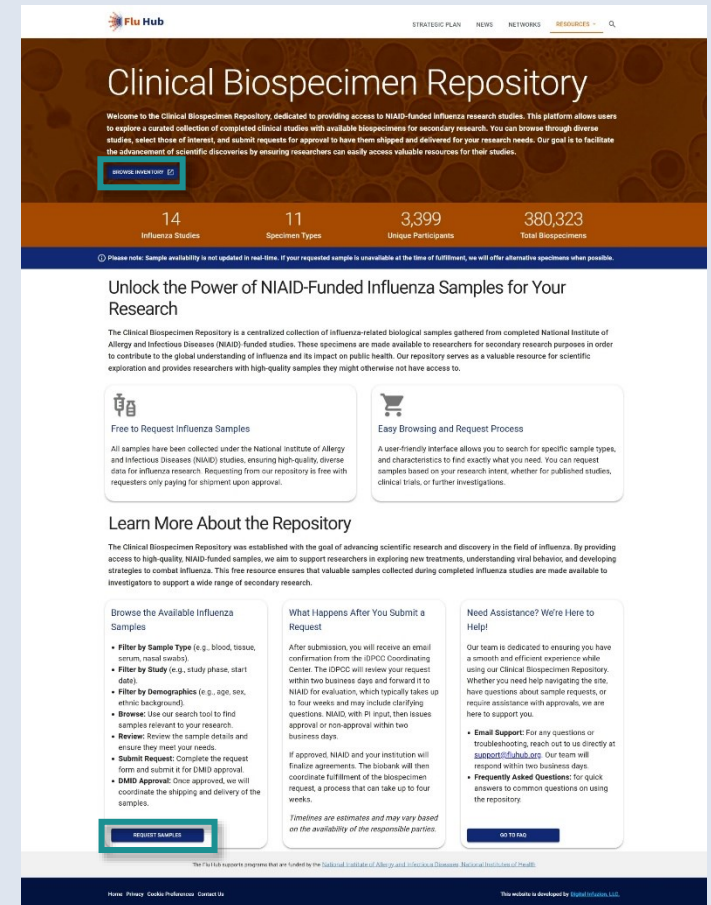


# Clinical Biospecimen Repository User Guide

## Interface Overview

Click on the **Browse Inventory** or **Request Samples** button from the Landing Page.

- 1. Search:** Search within the search bar using all keywords within the database or selectively search by clicking on the *Filter Results* in the sidebar navigation to open the menu and filter by Keywords, Start Date, Study Phase, and Intervention Name.
  - Check or adjust the applied filters.
  - Close the window by clicking the **Hide** button in the filters bar.
- 2. Review** your selections.
- 3. Data Visualizations:**
  - Hover over a specific visual to explore additional information (e.g., Study Location map, Age Groups, Specimen Type).
  - Click on the controls at the top of the visuals to expand or download the image (as a PNG or PDF).



## Data Grid Overview

You will see a custom data grid tailored to your search, featuring enhanced browsing tools.

1. View the available studies that meet the search criteria.
2. **Manage Columns:** Open a panel listing all available columns. Use checkboxes to select which columns you want to be visible in the data grid.
3. **Download:** Select data grid rows into CSV format for convenient exporting.
4. **Filter:** Organize data grid columns ascending, descending, or filter by specific criteria (e.g., contains, starts / ends with, equals, not) by clicking on the three parallel horizontal lines.
5. **Grid Customizations:** Adjust cell size; rearrange data within the grid for personalized viewing.

Study Title	Arms	Age Category	Specimen Types	HAI Assay Agents Tested	HAI Assay V
<input checked="" type="checkbox"/> Two Doses of Multimeric-001 (M-001) Followed by Influenza Vaccine	• Placebo - IM4 • M-001 - IM4	• Adult	• PBMC • Serum	• Influenza A/Michigan • Influenza A/Sydney • Influenza B/Colorado • Influenza B/Phuket/	• Visit 0 • Visit 1 • Visit 2 • Visit 3 • Visit 4 • Visit 5
<input type="checkbox"/> Sanofi 2017 H7N9 With/Without AS03 in Adults/Elderly	• Group 1 • Group 2 • Group 3 • Group 4...	• Adult • Geriatric	• Serum	• Influenza A/Hong K	• Visit 0 • Visit 1 • Visit 2 • Visit 3 • Visit 4 • Visit 5

## Review Available Studies

1. After searching, you can explore information about the available studies. Information on the available studies can be found within the data grid.
2. Select a study on the list by clicking the checkbox to the left of the row.
3. Select the **Browse Samples** button to see samples in the study.

## View Study Details

To understand the background, design, and scope of each study, click on a study title of interest from the data grid. A detailed pop-up window will appear with comprehensive study information, including:

- **Publication**
  - The **View Summary** button provides an AI-generated summary of the full study content found on ClinicalTrials.gov. This feature is designed to save time and help you quickly determine whether a study is relevant to your research needs.
- **Study Information**
- **Study Design**
- **Arms and Interventions**
- **Study Inclusion / Exclusion Criteria**

Study Title	Arms
<input type="checkbox"/> Safety and Immunogenicity of a Monovalent Inactivated Influenza H3N2 Variant (H3N2v) Vaccine in Pediatric Populations	ears o ars ol month:
<input type="checkbox"/> H7N9 Boost in Healthy Adults	• Group 1 • Group 2
<input type="checkbox"/> H7N9 Vaccination With and Without AS03 and Unadjuvanted H3N2v Vaccination: Standard and Systems Biology Analyses	• Arm 1 • Arm 2 • Arm 3
<input type="checkbox"/> H5N8 Mix and Match With or Without AS03 or MF59 in Healthy Adults: Immunology	• Arm 5: 15 mcg A/H! • Arm 1: 3.75 mcg A/I • Arm 6: 15 mcg A/H! • Arm 2: 15 mcg A/...
<input type="checkbox"/> Sanofi 2017 H7N9 With/Without AS03 in Adults/Elderly	• Group 1 • Group 2 • Group 3 • Group 4...

Browse Samples 🔍

- **Outcome Measures**

From the pop-up window, users can:

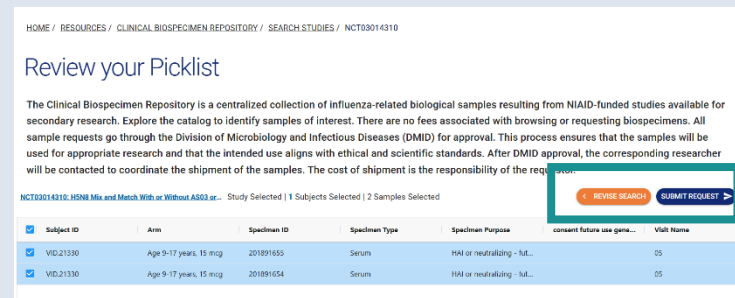
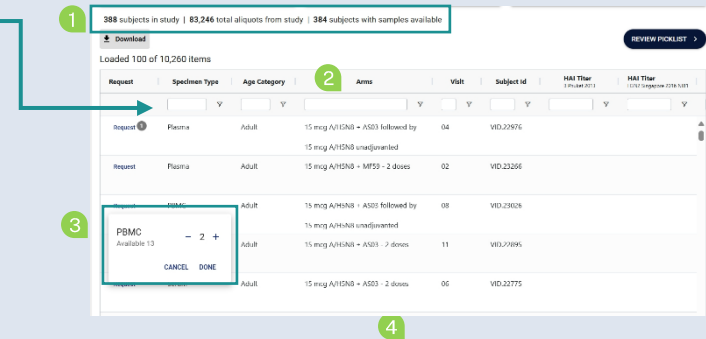
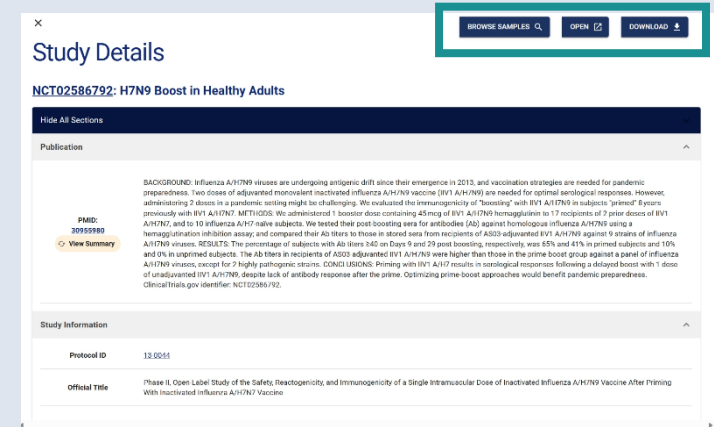
1. Click the **Browse Samples** button to find biospecimen(s).
2. Click the **Open** button to view Study Details in a separate window.
3. Click the **Download** button to open or save Study Details as a PDF.

## Search Specimen

1. Search results will identify the number of subjects in the study, total aliquots from the study, and the number of subjects with samples available.
2. **Filtering Columns:**
  - Click on the hamburger menu to open the filter options.
  - Select your criteria and enter the value(s) to filter.
  - Turn the filters off by deleting the value(s) you entered.
3. Find the **Request** field in the table to add samples to your cart.
  - Add or remove samples by clicking the plus or minus icon.
  - Select the **Cancel** or **Done** button.
4. Select the **Review Picklist** button.

## Review of Your Picklist

1. Review your picklist to ensure that it fits your research needs. Verify the sample characteristics; confirm the quantity and the volume.
2. To make edits in the system to refine your list, select the **Revise Search** button to go back to the Search Specimen page.
3. Select the **Submit Request** button to complete the required *Specimen Request Form*.



## Specimen Request Form

1. Complete the *Specimen Request Form*, including Requester Information, Study & Funding Context, Specimen Need Overview, Regulatory & Compliance, and Data Security & Privacy.
2. Select the **Submit Request** button.
3. Your request will be reviewed by NIAID. Once approved, you will be contacted.

## Help & Support

- Visit the online [FAQs](#) for support.
- Contact us – For special requests or questions: [support@ceirr-network.org](mailto:support@ceirr-network.org).
- Latest Updates – Check back often for new studies and added biospecimens.

December 3, 2025

The screenshot shows a web form titled "Specimen Request Form" with a close button (x) in the top right corner. Below the title is a note: "Fill out all required fields marked with \*". The form is organized into sections, with the first section being "Requester Information", which is currently expanded. This section contains the following fields: Name (required), Title, Institution (required), Department, Address Line 1\* (required), Address Line 2, City\* (required), State/ Province\* (required), Zip/ Postal Code\* (required), Country (dropdown menu), Email (required), Phone, Fax, Principal Investigator Name (required), and Principal Investigator Email (required). Below the "Requester Information" section are four collapsed sections: "Study & Funding Context" (with a help icon), "Specimen Need Overview", "Regulatory & Compliance", and "Data Security & Privacy".